

Anti-PRLR hlgG1 Antibody(Mat3)

Product information

GM-27198AB-10	10 µg
GM-27198AB-100	100 µg
GM-27198AB-1000	1 mg

Antibody Information

Species Reactivity	Human; Mouse; Cynomolgus
Clone	Mat3
Source/Isotype	Monoclonal human IgG1(M252Y,S254T,T256E,P329A,L234A,L235A),κ
Application	Flow cytometry; Block
Specificity	Detects PRLR
Gene	PRLR
Other Names	HPRL; MFAB; hPRLrI; RI-PRLR
Gene ID	5618(human); 19116(mouse); 102139140 (cynomolgus)
Background	All effects of the hormone prolactin (PRL) are mediated by its receptor (PRLR), which plays an important role in the PRL signal transduction cascade. Prolactin receptor (PRLR) is a type I cytokine receptor encoded by PRLR gene on human chromosome 5P13-14. PRLR is a membrane binding protein of the cytokine receptor superfamily. PRLR can also bind to and be activated by growth hormone (GH) and human placental prolactin (hPL). It plays an important role in the alveolar development of breast lobules during pregnancy and lactation.
Storage	Store at 2-8°C short term (1-2 weeks).Store at ≤ -20°C long term. Avoid repeated freeze-thaw.
Formulation	Phosphate-buffered solution, pH 7.2.
Endotoxin	< 1 EU/mg, determined by LAL gel clotting assay

Data Examples

Flow cytometry

The recommended usage range is 0.5-4 µg per test. H_PRLR CHO-K1 Cell Line(Catalog # GM-19002AB) was stained with Anti-PRLR hIgG1 Antibody (Catalog # GM-27198AB) or isotype control antibody, followed by anti-Human IgG APC-conjugated Secondary Antibody.

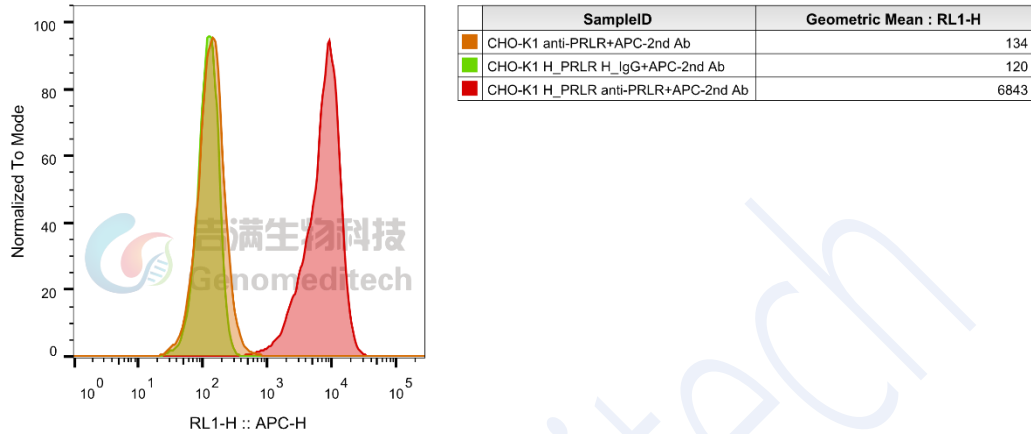


Fig. FACS

Flow cytometry

The recommended usage range is 0.5-4 µg per test. Cynomolgus_PRLR CHO-K1 Cell Line(Catalog # GM-C20046) was stained with Anti-PRLR hIgG1 Antibody (Catalog # GM-27198AB) or isotype control antibody, followed by anti-Human IgG APC-conjugated Secondary Antibody.

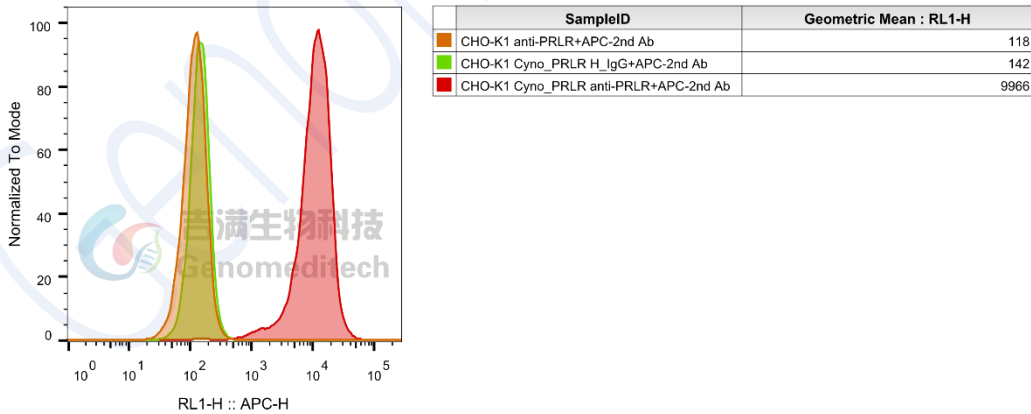


Fig. FACS

Flow cytometry

The recommended usage range is 0.5-4 µg per test. Mouse_PRLR CHO-K1 Cell Line(Catalog # GM-C20045) was stained with Anti-PRLR hIgG1 Antibody (Catalog # GM-27198AB) or isotype control antibody, followed by anti-Human IgG APC-conjugated Secondary Antibody.

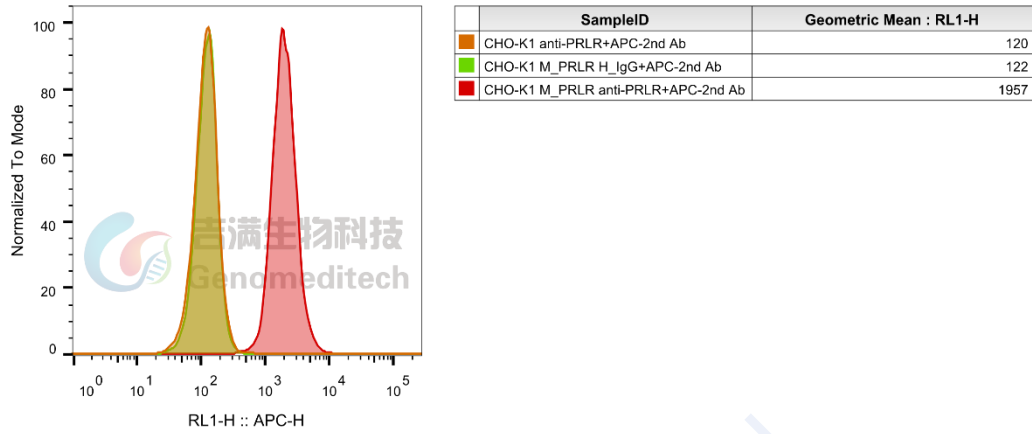
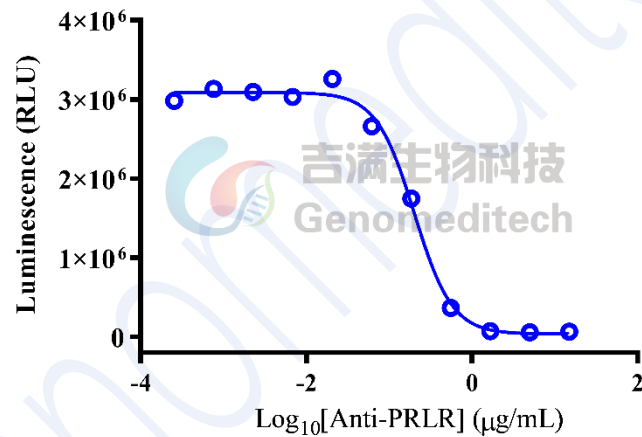


Fig. FACS

Block assay

Anti-PRLR hIgG1 Antibody (Catalog # GM-27198AB) inhibits H_PRL(prolactin) Reporter Cell Line (Catalog # GM-C19941) Luminescence induced by Recombinant Human Prolactin Protein. IC50 for this effect is 0.2015 $\mu\text{g/mL}$.



	H_PRL Reporter Cell Line
IC50	0.2015

Fig. assay